



NSW BOS Mathematics K–10 Syllabus

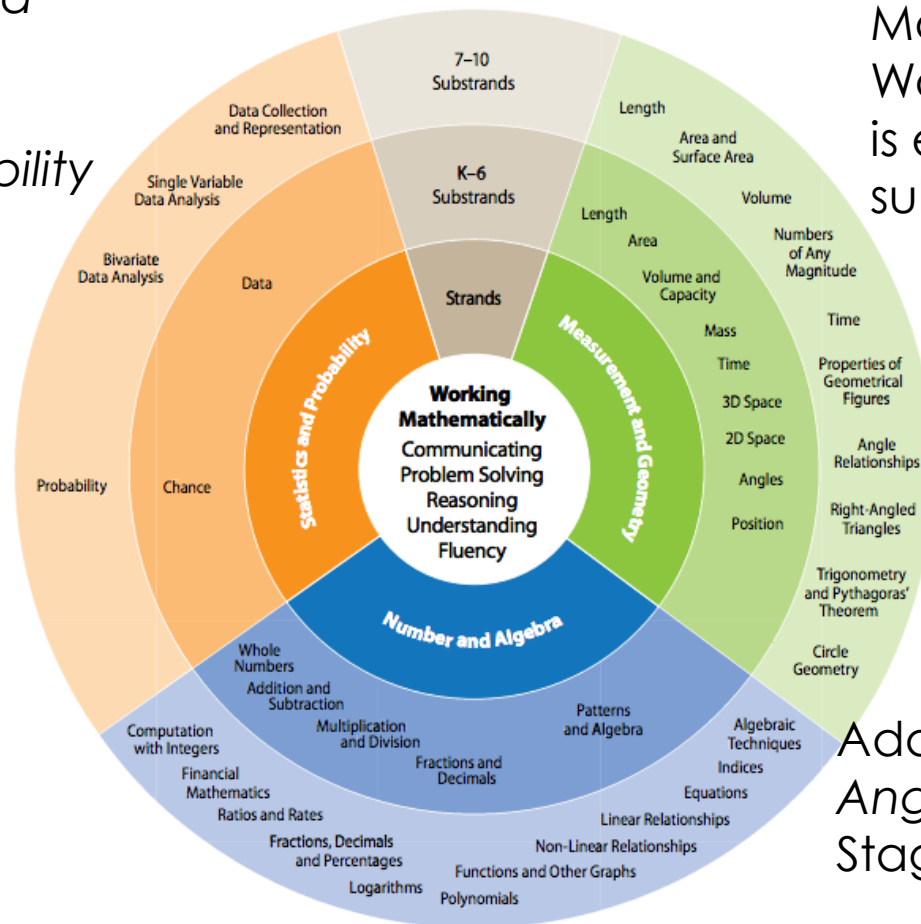
ORGANISATION OF CONTENT

Organisation of content – P32

Content is organised into 3 strands:

Number & Algebra
Measurement & Geometry
Statistics & Probability

The diagram represents the relationship between the strands and substrands. It is not intended to indicate the time spent on each strand. (NSW BOS Mathematics Syllabus 2013)

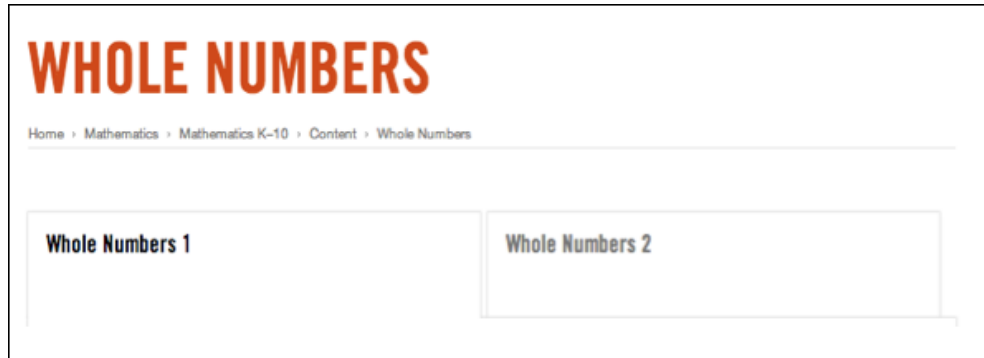


Working Mathematically comprises five interrelated components and is central to the teaching and learning of Mathematics. Working Mathematically is embedded in each substrand.

Additional substrand – Angles in Stage 2 and Stage 3

Organisation of content

- The content in most substrands is divided into two parts.



- The first part typically focuses on early concept development. (Usually 1 – eg. Whole Number 1.)
- This distinction assists teachers to plan learning experiences that meet the needs of individual students as they develop their conceptual understanding along the continuum of learning.

CONTENT PAGES

- Choose a strand in the syllabus relevant to your stage and note the following:
- Particular strands are separated into two parts (1 and 2). It is up to individual teachers to distinguish where this is taught.
- Square (Circular in the text) bullets show knowledge skills and understanding.
- Triangular bullets show associated components of Working Mathematically.
- Background information and language sections are provided to support student engagement and understanding.
- Working Mathematically outcomes appear first followed by the content outcome.
- Outcomes are coded and linked to content.
- Australian Curriculum content descriptions are identified by codes.
- Learning across the curriculum content is incorporated and identified by icons.
- Each language section includes a word list. Words appearing for the first time in the substrand are listed in bold.